

# 大宅門寫意 - 蘆溝曉月

大阮

趙季平

慢板  $\text{♩} = 56$

*mf* *p* *mf*

5

20

*mf*

28

32

$\text{♩} = 48$

8

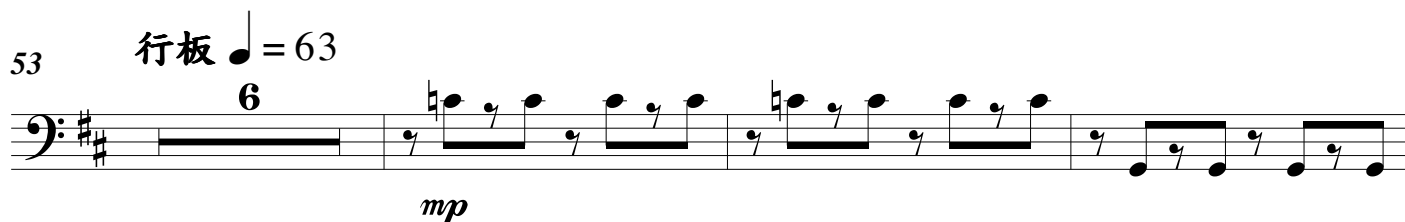
*p* *mp* *p*

43

48

53 行板 ♩ = 63

6

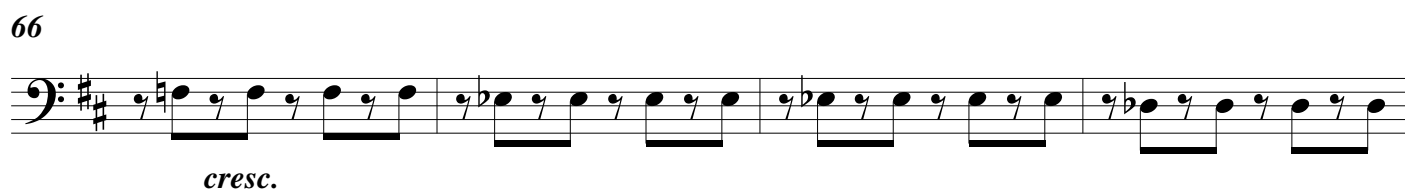


*mp*

62

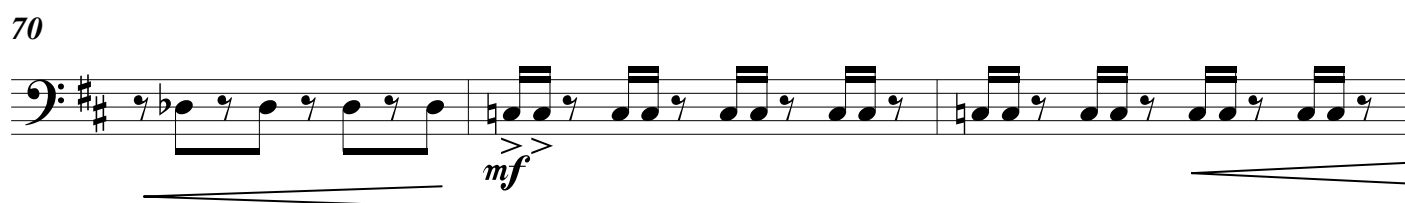


66



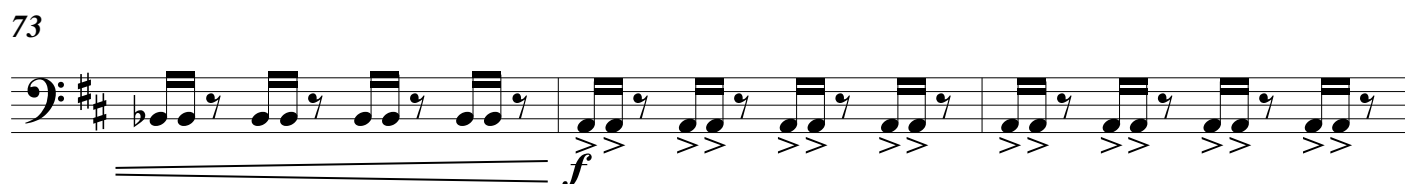
*cresc.*

70



*mf*

73



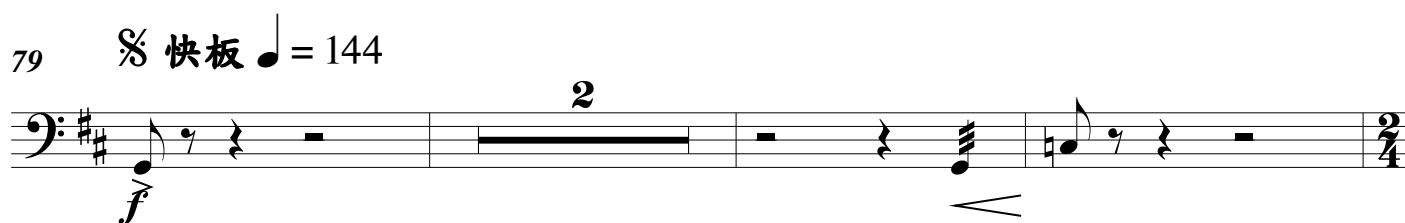
*f*

76



79 快板 ♩ = 144

2



*f*

84



*f*

88



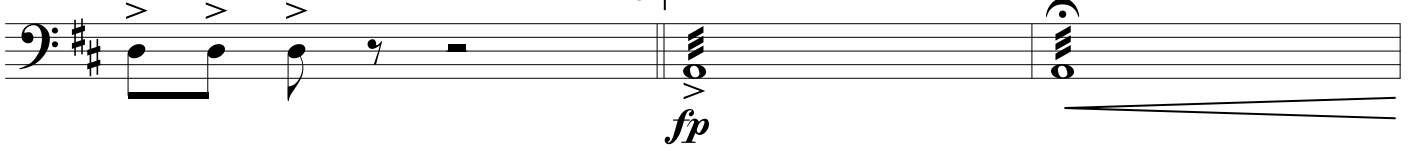
91



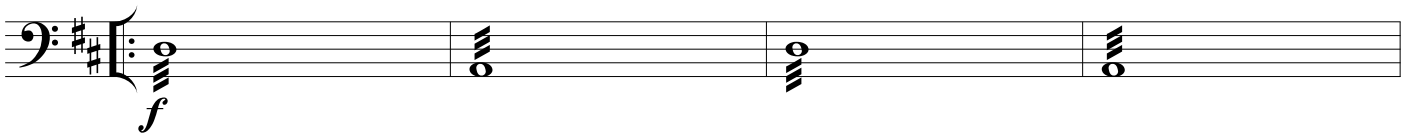
94



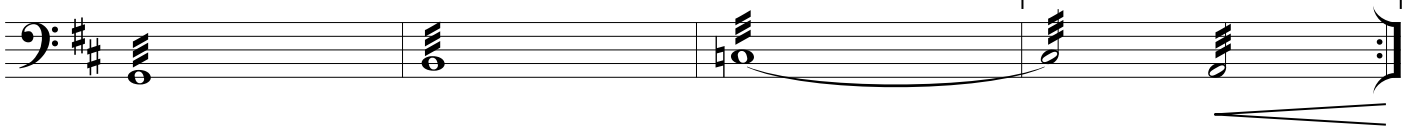
97



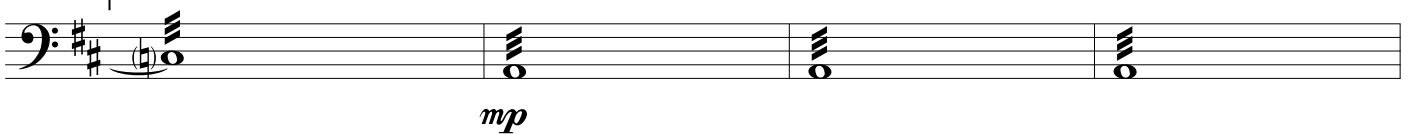
100 廣板 ♩ = 48



104



108



112

