

月兒高

高音笙

古 曲
 彭修文 改編

(一) 海島冰輪

Largo ♩ = 28 深遠

快起漸慢

Musical notation for the first staff of '海島冰輪'. It begins with a treble clef and a 4/4 time signature. The first measure contains a whole note with a fermata. The second measure is a whole rest. The third measure contains a whole note chord with a fermata, marked with a forte (*f*) dynamic. The fourth measure contains a whole note chord with a fermata. The fifth measure contains a whole note chord with a fermata. The sixth measure contains a whole note chord with a fermata. The seventh measure contains a whole note chord with a fermata. The eighth measure contains a whole note chord with a fermata. The piece ends with a double bar line.

Musical notation for the second staff of '海島冰輪'. It begins with a treble clef and a 4/4 time signature. The first measure contains a whole note with a fermata. The second measure is a whole rest. The third measure is a whole rest. The fourth measure is a whole rest. The fifth measure is a whole rest. The sixth measure is a whole rest. The seventh measure is a whole rest. The eighth measure is a whole rest. The piece ends with a double bar line.

(二) 江樓望月

14 Adagio con grazioso

Musical notation for the first staff of '江樓望月'. It begins with a treble clef and a 2/4 time signature. The first measure is a whole rest. The second measure is a whole rest. The third measure is a whole rest. The fourth measure is a whole rest. The fifth measure is a whole rest. The sixth measure is a whole rest. The seventh measure is a whole rest. The eighth measure is a whole rest. The piece ends with a double bar line.

(三) 海嶠躊躇

26 Adagio 感情洋溢、略有激動

Musical notation for the first staff of '海嶠躊躇'. It begins with a treble clef and a 2/4 time signature. The first measure is a whole note chord with a fermata. The second measure is a whole note chord with a fermata. The third measure is a whole note chord with a fermata. The fourth measure is a whole note chord with a fermata. The fifth measure is a whole note chord with a fermata. The piece ends with a double bar line.

Musical notation for the second staff of '海嶠躊躇'. It begins with a treble clef and a 2/4 time signature. The first measure is a whole note chord with a fermata. The second measure is a whole note chord with a fermata. The third measure is a whole note chord with a fermata. The fourth measure is a whole note chord with a fermata. The fifth measure is a whole note chord with a fermata. The sixth measure is a whole note chord with a fermata. The seventh measure is a whole note chord with a fermata. The eighth measure is a whole note chord with a fermata. The piece ends with a double bar line.

Musical notation for the third staff of '海嶠躊躇'. It begins with a treble clef and a 2/4 time signature. The first measure is a whole rest. The second measure is a whole rest. The third measure is a whole rest. The fourth measure is a whole rest. The fifth measure is a whole rest. The sixth measure is a whole rest. The seventh measure is a whole rest. The eighth measure is a whole rest. The piece ends with a double bar line.

Musical notation for the fourth staff of '海嶠躊躇'. It begins with a treble clef and a 2/4 time signature. The first measure is a whole note chord with a fermata. The second measure is a whole note chord with a fermata. The third measure is a whole note chord with a fermata. The fourth measure is a whole note chord with a fermata. The fifth measure is a whole note chord with a fermata. The sixth measure is a whole note chord with a fermata. The seventh measure is a whole note chord with a fermata. The eighth measure is a whole note chord with a fermata. The piece ends with a double bar line.

2

(四) 銀蟾吐彩

62 *Agitato tempo rubato* 情緒激動 *accel.*



66 *a tempo*



(五) 秋露滿天

84 慢起漸快

rit.



89 *rit.*



97 *piu mosso*



112

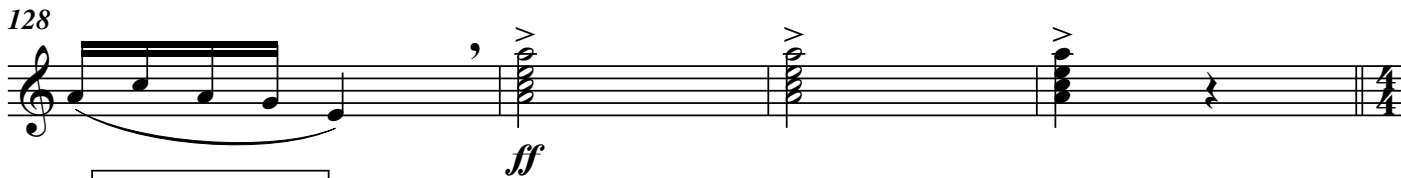


116

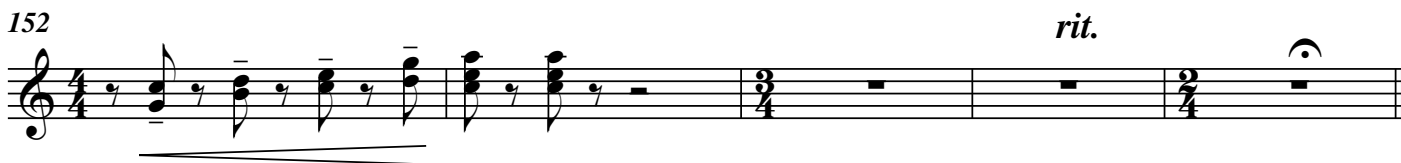


120





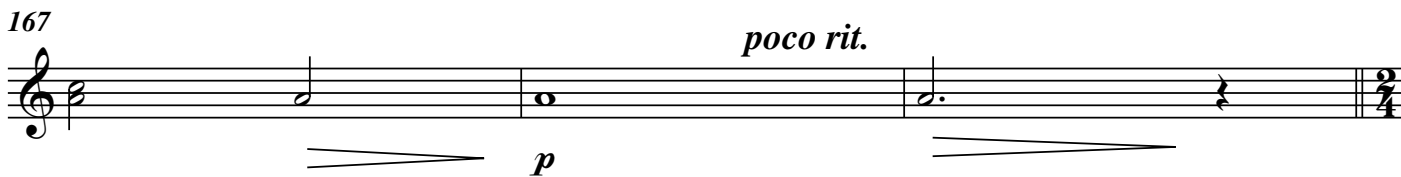
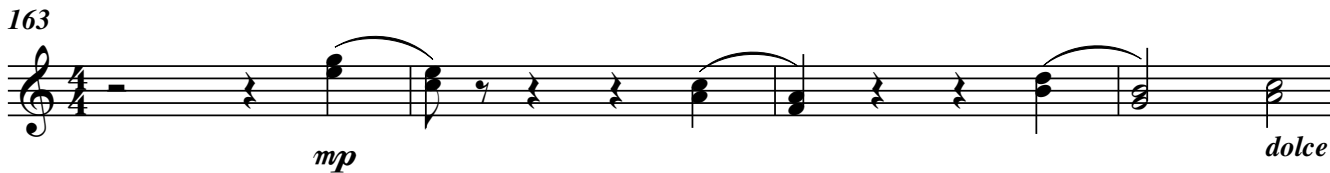
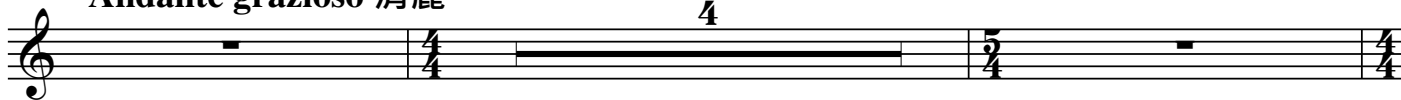
(六) 素娥旖旎



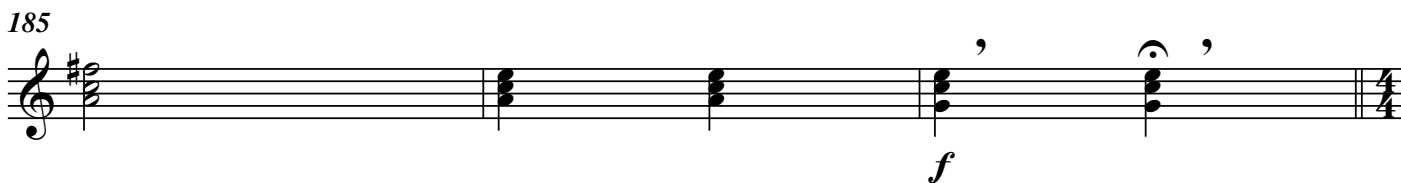
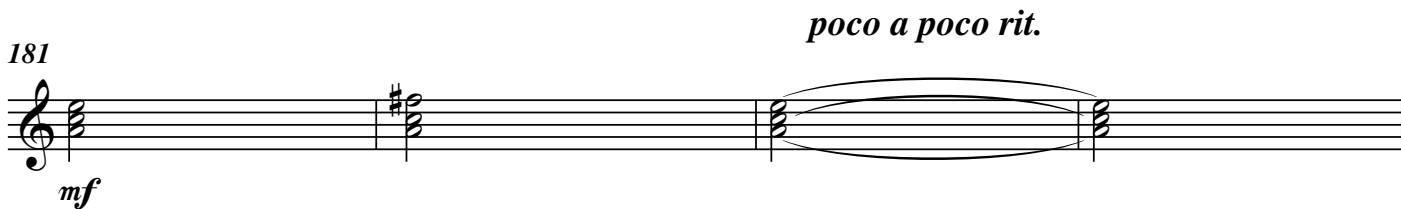
4

(七) 皓魄當空

157 *Andante grazioso* 清麗



(八) 銀河橫渡



(九) 玉宇千層

piu mosso

188 Grave 11 199 *mf*

202 *poco a poco cresc.*

206 *stretto* *f* *ff*

210 *meno mosso* *mp*

213

216 *f* *sff* *ff* *allargando*

219 *fff* *lunga morendo* *ppp*