

高胡

唐響

伍卓賢曲
(2017修訂合奏版)

夢 ♩ = 62 ca. 稍自由

fff > pp
「唏！」氣聲叫一聲

6

12

18

♩ = 56

25

31

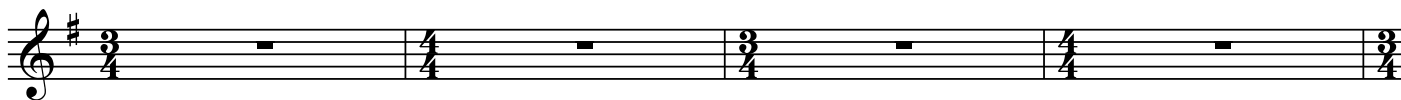
mp

35

mp

37

41



45



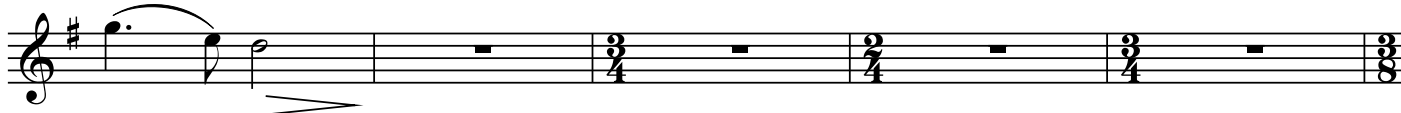
50



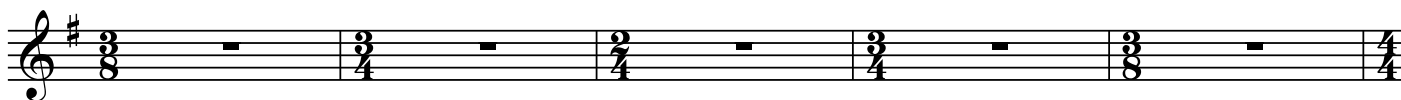
53



56



61



66



73



77



81



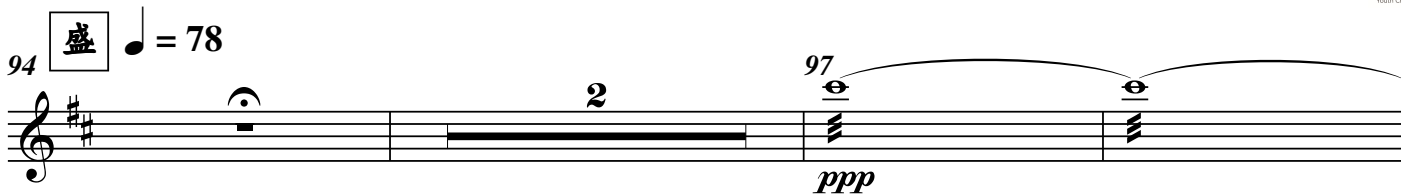
84



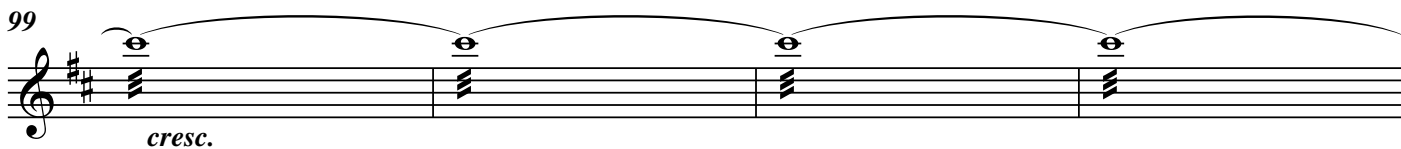
88



94 **盛** ♩ = 78

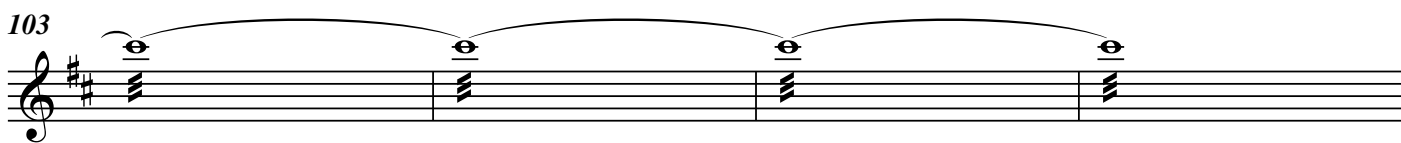


99



cresc.

103



107




f

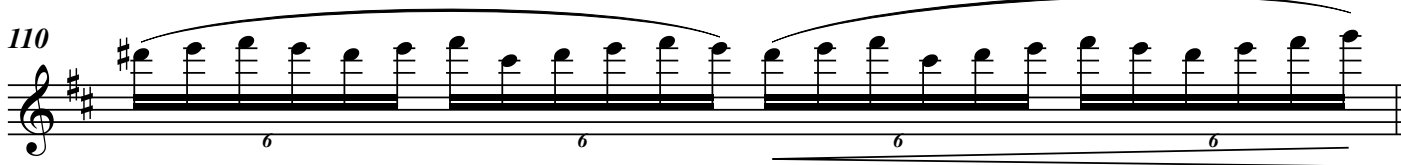
108



109



110



♩ = 156

111

ff *f <*

114

ff

117

Glissando *ff*

119

mf *ff*

122

mf 3

128

132

f *p* 16

151



mf

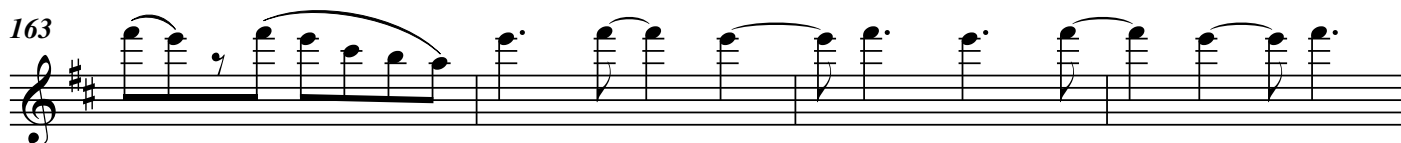
155



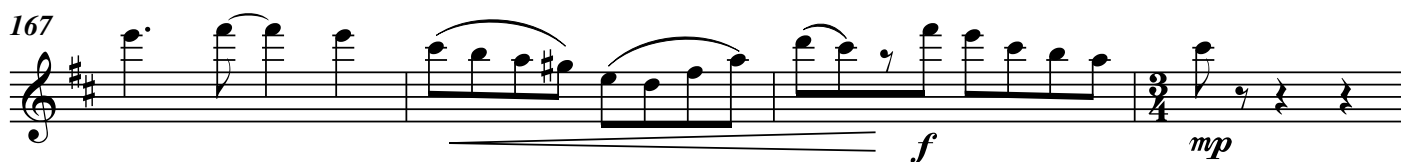
159



163



167



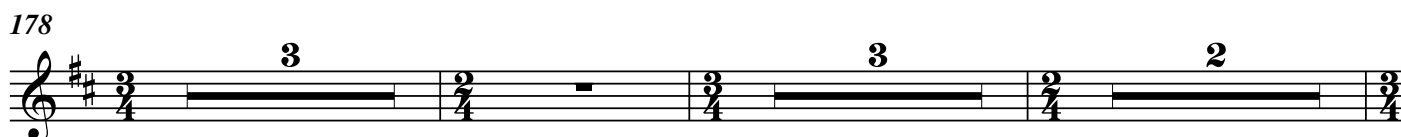
f *mp*

171



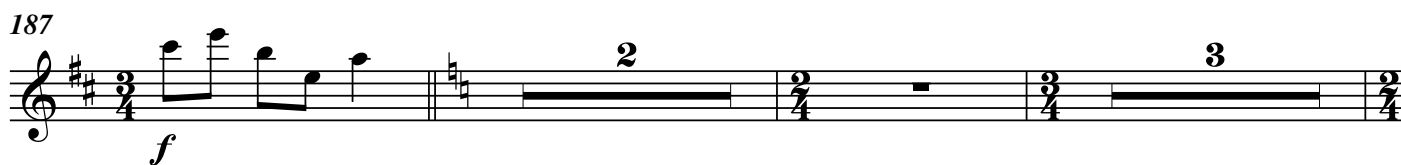
3 2

178



3 3 2

187



f 2 3

194

2 3

200

3 2 205
mp

206

f

209

212

p

215

f

218

221

ff

224 14 238



241



245



249



254



257



260



263



266




Musical notation for measure 266, featuring a treble clef, a key signature of two sharps (F# and C#), and a series of notes with stems and beams.

270



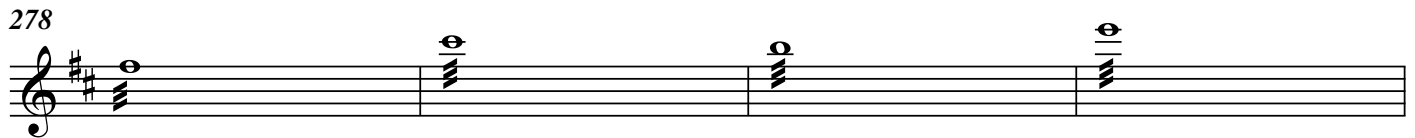
Musical notation for measure 270, featuring a treble clef, a key signature of two sharps, and notes with stems and beams, including a slur over the first two notes.

274



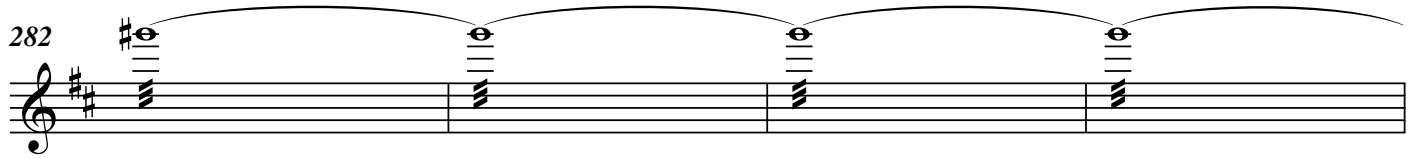
Musical notation for measure 274, featuring a treble clef, a key signature of two sharps, and notes with stems and beams.

278



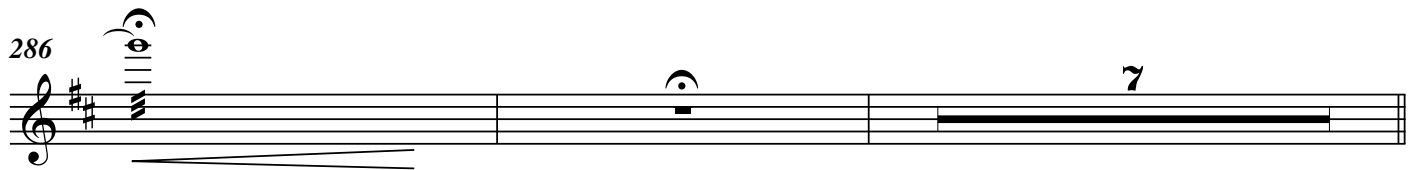
Musical notation for measure 278, featuring a treble clef, a key signature of two sharps, and notes with stems and beams.

282



Musical notation for measure 282, featuring a treble clef, a key signature of two sharps, and notes with stems and beams, including a slur over the first four notes.

286



Musical notation for measure 286, featuring a treble clef, a key signature of two sharps, and notes with stems and beams, including a slur over the first two notes and a fermata over the last note.


295 舞 ♩ = 62 ca. (二胡)

35




334 [高胡]

mf



336


f



338



340



342



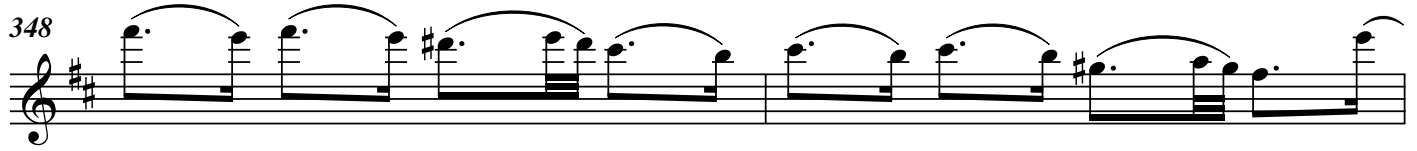
344



346

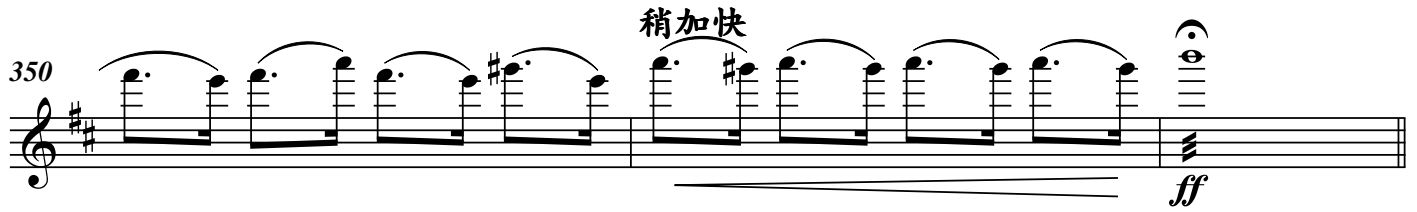


348



350

稍加快



同 ♩ = 56
(中胡)

353



357

稍加快



361 $\text{♩} = 66$

f

363

365 $\text{♩} = 69$

366

367

368

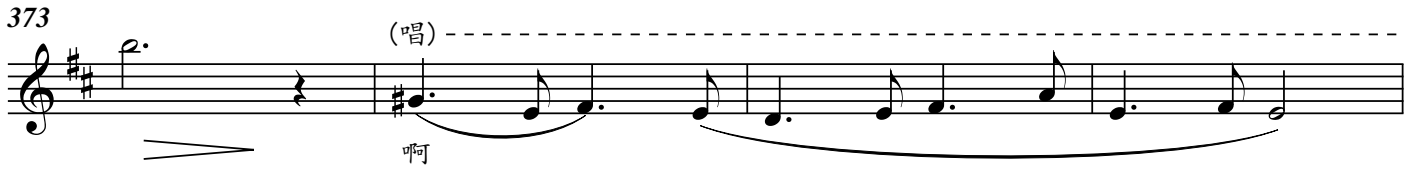
369

370

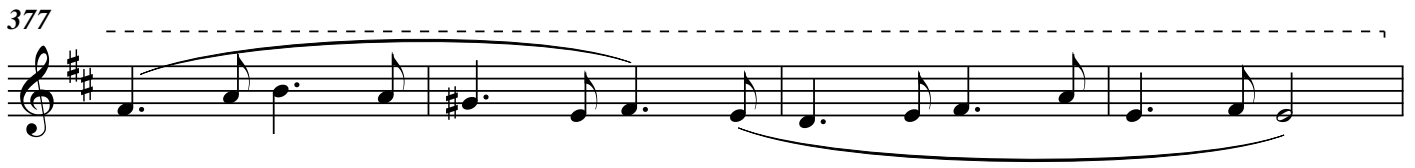
371

372

373 (唱) 啊



377




381 *f*



383



385



386



387



388



389 稍慢 *ff* *fff*

